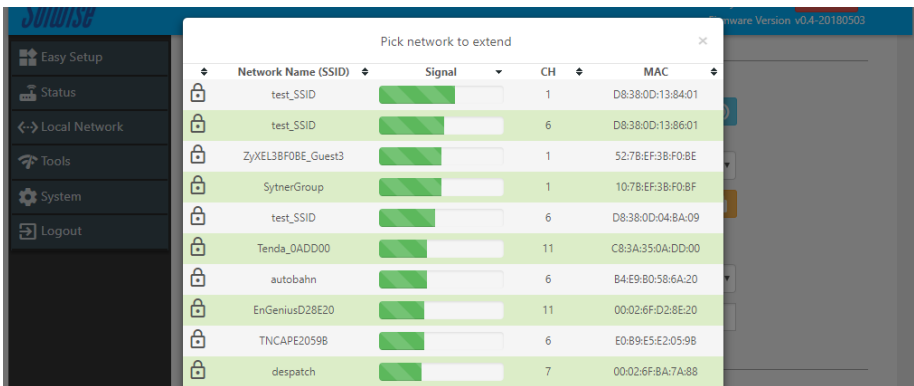


USBWIFIRPT-3000A Installation Instructions

1. Plug your USB antenna is into the USBWIFIRPT-3000A (router) and then connect it to power, it's important to do it in this order.
2. Once the router has booted up (about a minute) search for wireless network on your computer, tablet, Ipad or other device. You should see an open network "USBWIFIRPT-3000A", connect to the network.
3. Open a web browser, Chrome, IE, Safari, Firefox etc and in the address bar enter the IP address 192.168.45.1. You will be asked to set a password, this is for accessing the router in future, so make a note of it.
4. The router will search for wireless networks in the area and you will be presented with a screen like this:-



5. Click on the network you want to connect to, a select button will appear, click on it. A new screen will appear.
6. If the wifi you are connected to has a wifi password you will be asked for it in the top half of the screen. On the bottom of the screen you can change the wifi name of your router if you wish and you can also set a password.
7. Click on "finish", the router will reboot and you will lose connection. Search again for wifi networks, reconnect to USBWIFIRPT-3000A or if you changed the name to whatever you called it, if you set a password you will also have to enter it.
8. Re-enter the IP address 192.168.45.1 in your web browser and you will be presented with a status page showing it connected to your selected network. You should now be able to browse the internet and connect other devices to the router which will be automatically connected to the internet, no further configuration required.